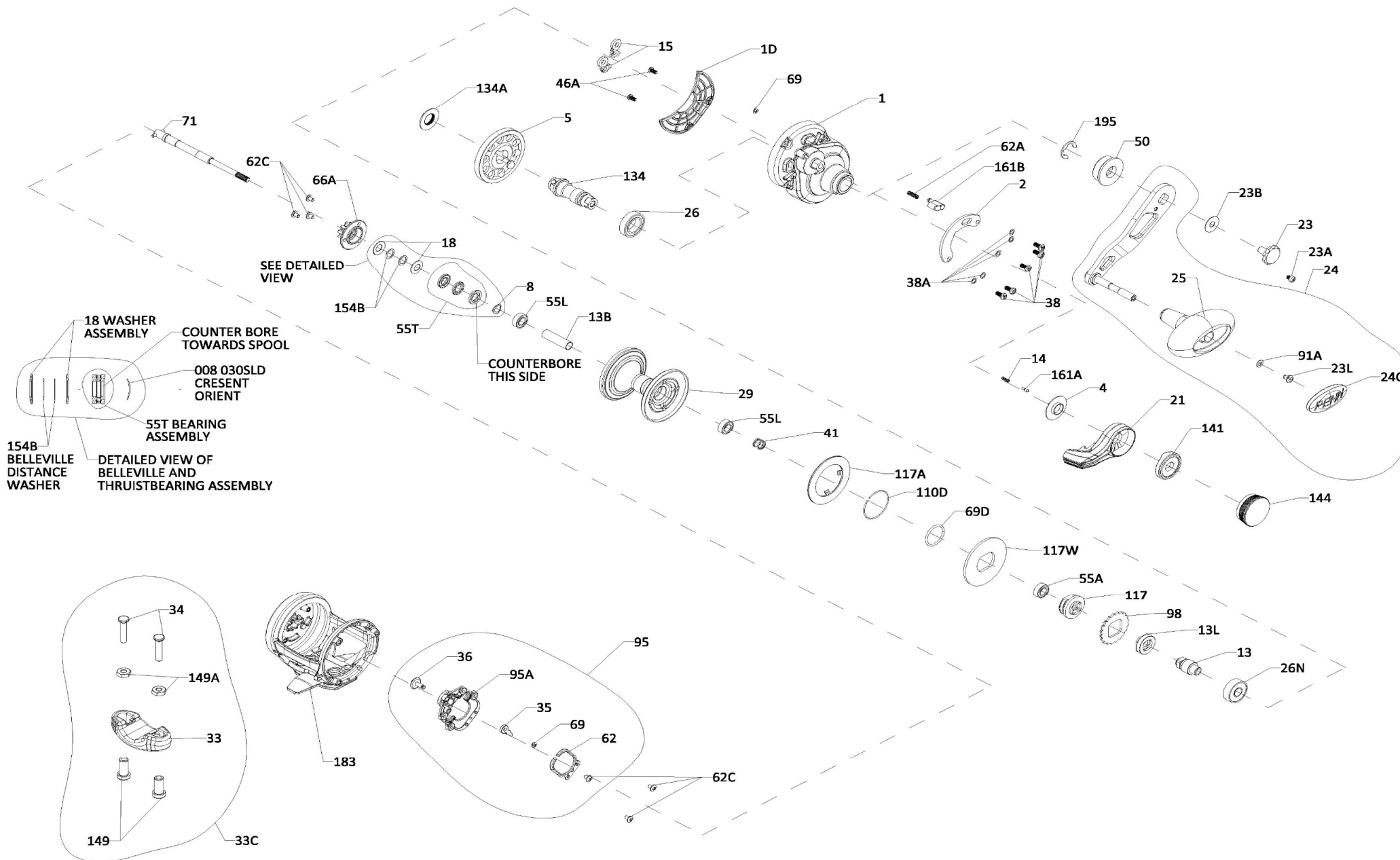




PARTS LIST FOR MODEL  
Fathom II 10XNLD, 15LD  
REEL PART NO. 1563376, 1563377



Key No.	Part No.	Penn Style No.	Description
1	1580132	1-FTHII10XNLD	Right Side Plate (10XN)
1	1580133	1-FTHII15LD	Right Side Plate (15)
1D	1580169	1D-FTHII15LD2	Gearbox Cover
2	1580173	2-FTHII15LD2	Quadrant
4	1264978	4-TRQ15LD2	Lever Washer
5	1338138	5-FTH15LD	Main Gear
8	1257843	8-30SLD	Spring Washer
13	1338142	13-FTH15LD	Pinion
13B	1580185	13B-FTHII10XNLD2	Spacer Tube (10XN)
13B	1580186	13B-FTHII15LD2	Spacer Tube (15)
13L	1338146	13L-FTH40NLD	Spacer
14	1181406	14-535	Spring
15	1229374	15-TRQ40	Dog Asm (2 req)
18	1265001	18-TRQ40NLD2	Spring Washer (2 req)
21	1580195	21-FTHII15LD2	Drag Lever
23	1589722	23-FTHIILD	Handle Screw (Black)
23A	1589723	23A-FTHIILD	Handle Lock Screw (Black)
23B	1207784	23B-20	Handle Screw Washer
23L	1191283	23L-750	Screw
24C	1191335	24C-66	Cap- Handle Knob
25	1240293	25-TRQ40	Handle Knob
26	1265023	26-TRQ40NLD2	Bearing
26N	1182145	26N-25	Bearing
29	1580209	29-FTHII10XNLD2	Spool (10XN)
29	1580210	29-FTHII15LD2	Spool (15)
33	1290729	33-TRQ	Rod Clamp (15)
33C	1580218	33C-FTHIILD2	Rod Clamp Kit (15)
34	1580220	34-FTHIILD2	Screw, Rod Clamp (15) (2 req)
35	1188656	35-20	Click Tongue
36	1516151	36-FTHII15SD	Click Button
38	1309885	38-FTH15LD	Screw (5 req)
38A	1188649	38A-20	Flat Washer (5 req)
41	1309886	41-FTH15LD2	Drag Disengaging Spring
46A	1488755	46A-FTHII30LW	Cover Plate Screw (2 req)
50	1309888	50-FTH30LD2	Shield Guard
55A	1238912	55A-50SLD	Ball Bearing
55L	1286985	55L-20	Ball Bearing (2 req)
55T	1238913	55T-30SLD	Thrust Bearing
62	1188664	62-20	Click Spring
62A	1236596	62-TRQ40	Spring Click Locator
62C	1188654	62C-20	Screw (7 req)
66A	1265059	66A-FTHLD	Click Gear
69	1188657	69-20	Retainer (2 req)
69D	1265060	69D-FTH15LD	Retaining Ring
71	1580229	71-FTHII10XNLD2	Spindle (10XN)
71	1580230	71-FTHII15LD2	Spindle (15)
91A	1277514	91A-TRQ40NLD2	Handle Knob Washer
95	1580237	95-FTHIILD2	Click Module Assembly
95A	1580238	95A-FTHIILD2	Click Module Housing
98	1265072	98-FTH15LD2	Ratchet
110D	1309895	110D-FTH15LD2	Retaining Ring
117	1309896	117-FTH15LD2	Drive Plate
117A	1309897	117A-FTH15LD2	Drag Washer (Assembly)
117W	1309900	117W-FTH15LD2	Drag Washer Metal
134	1338160	134-FTH40NLD	Gear Stud
134A	1265086	134A-30SLD2	Nut Gear Stud
141	1580246	141-FTHIILD	Cam Follower
144	1580247	144-FTHIILD	Preset Knob Assembly
149	1184702	149-45	Rod Clamp Nut (15) (2 req)
149A	1184706	149-200	Hex Nut (15) (2 req)
154B	1309904	154B-FTH40NLD2	Belleville Distance Washer (2 req)
161A	1265098	161A-TRQ15LD2	Lever Click Pin
161B	1265099	161B-TRQ40NLD2	Strike Button
183	1580251	183-FTHII10XNLD2	Frame Assembly (10XN)
183	1580252	183-FTHII15LD2	Frame Assembly (15)
195	1184955	195-40	Retaining Ring